

Willkommen  
Welcome  
Bienvenue



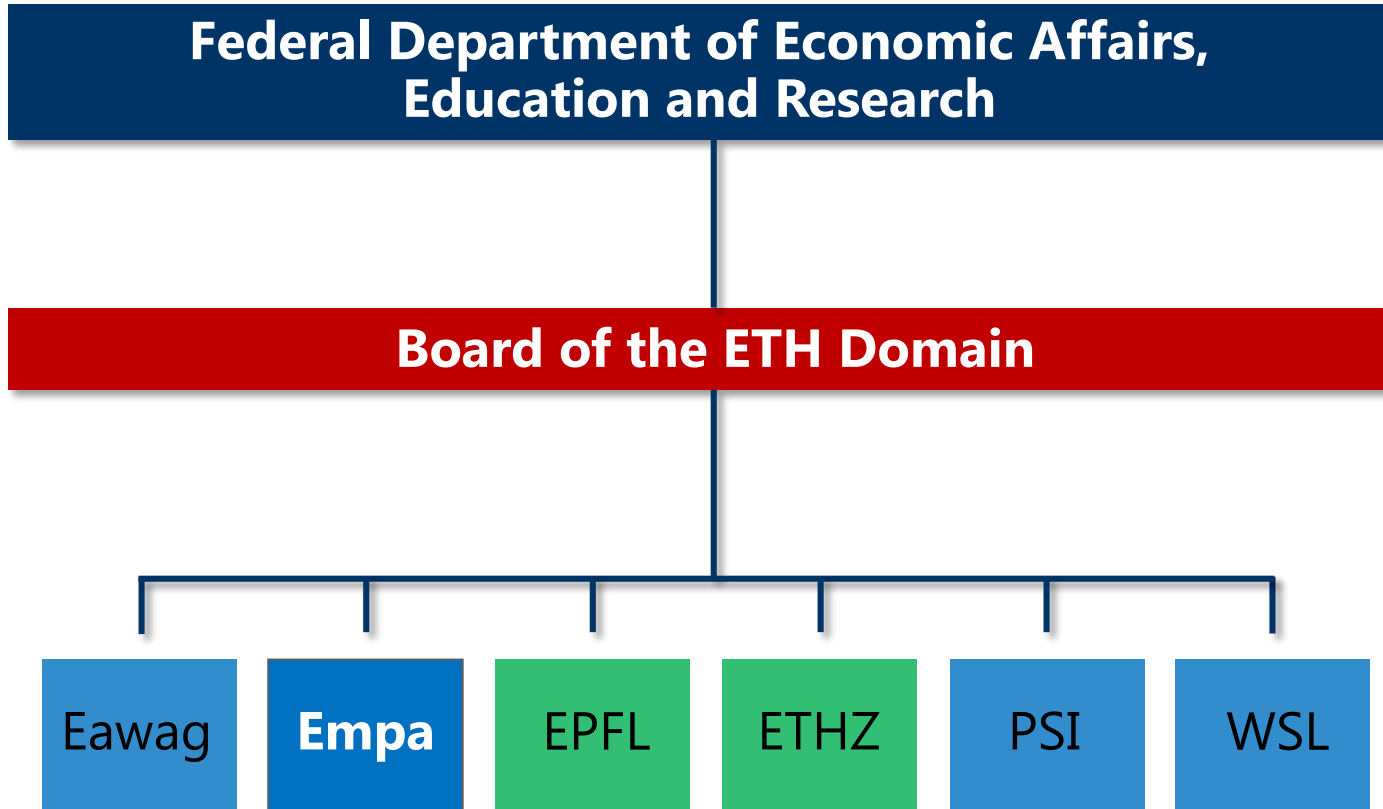
# Abteilung for Advanced Analytical Technologies

Portrait

**PD Davide Bleiner**

Head of Division

# Empa within the ETH Domain



Prof. G.L. Bona

# Empa Bridges Academia & Industry

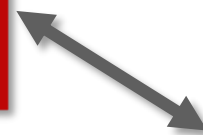


ETH/EPF,  
**Universities,**  
Fachhochschulen,  
National Labs

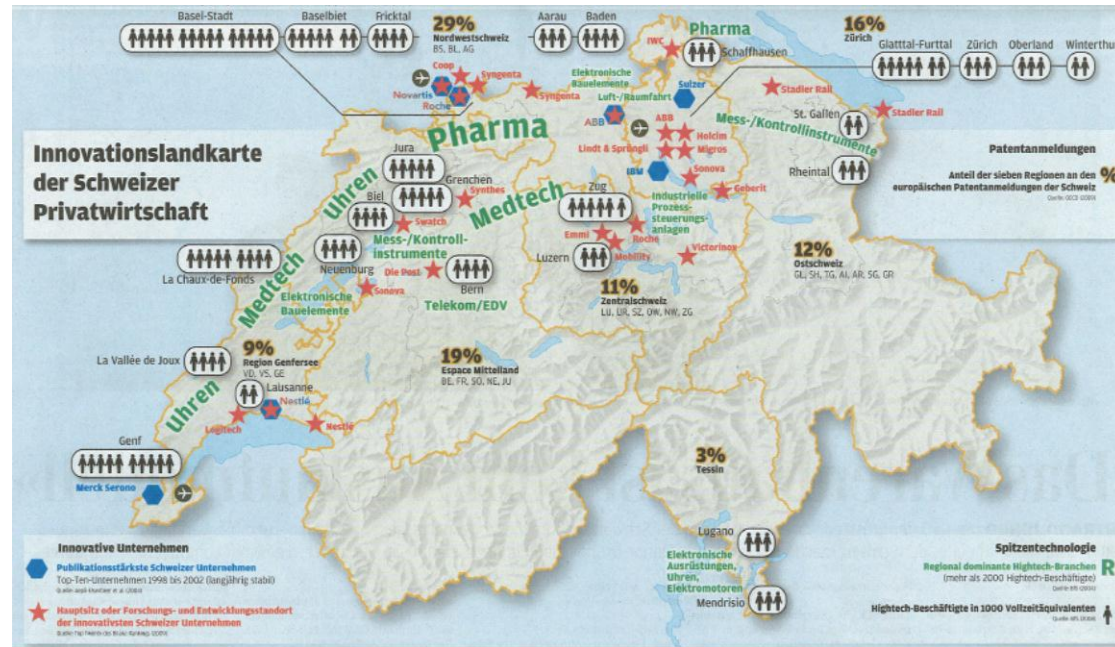


**Empa**  
(ETH Domain)

**Government,**  
Federal Offices



**Industry:**  
SME, large  
Corporations



# Federal Laboratories for Materials & Technology

## Advanced Materials and Surfaces



High Performance Ceramics

## Civil and Mechanical Engineering



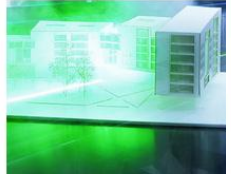
Road Engineering / Sealing Components



## Materials Meet Life



Protection & Physiology



Multiscale Studies in Building Phys

## Mobility, Energy & Environment



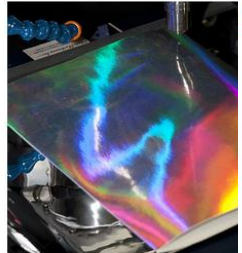
Materials for Energy Conversion



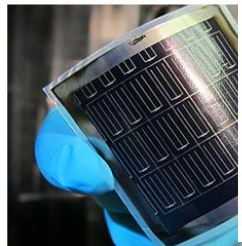
Advanced Analytical Technologies



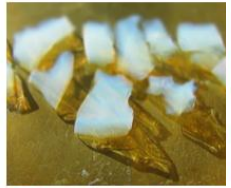
Air Pollution / Environmental Technology



Advanced Materials Processing

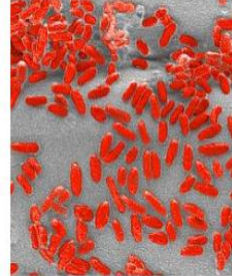


Thin films & Photovoltaics

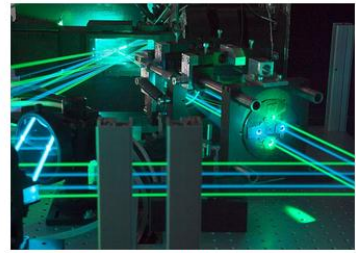


Building Energy Materials & Components

Functional Poly



Biointerfaces



Automotive Powertrain Technologies



Materials for Renewable Energy (Joint Empa-EPFL Lab)



Technology & Society



Acoustics / Noise Control



move



Head of Department Dr. Brigitte Buchmann



# Our Mission and Focus

- **Develop Analytical Methods...**
  - Lab Skills → State-of-the-Art Analytical Techniques
  - R&D Skills → Future Technologies
  
- **...Tailored to Challenges in Society & Industry**
  - No Routine Character
  - No Merely Academic
  - No Technique-Emphatic



# Feel the Chemistry

